

APPENDIX C

PART 1: 9 PAGES

SUBMISSION BY PUBLIC HEALTH

Doncaster hospital admissions relating to alcohol use

For the purposes of this report, data is taken from the Local Profiles for England (LAPE) and local alcohol specific admissions data to DRI supplied by Doncaster Integrated Care Board. Alcohol-related hospital admissions are used as a way of understanding the impact of alcohol on the health of a population. There are two measures used in Local Alcohol Profiles for England (LAPE) and elsewhere to assess this burden, the Broad and the Narrow measure. Again, for the purposes for this report the narrow measure will be used.

Narrow definition: A measure of hospital admissions where the primary diagnosis (main reason for admission) is an alcohol-related condition. This represents a Narrower measure. Since every hospital admission must have a primary diagnosis, it is less sensitive to coding practices but may also understate the part alcohol plays in the admission.

In general, the Broad measure gives an indication of the full impact of alcohol on hospital admissions and the burden placed on the NHS. The Narrow measure estimates the number of hospital admissions which are primarily due to alcohol consumption and provides the best indication of trends in alcohol-related hospital admissions.

Figure 1 shows Doncaster has a significantly worse hospital admission rate for alcohol-related conditions compared to England (552 per 100,000 compared to 456 per 100,000, respectively). Compared to the Yorkshire and Humber region Doncaster lies second worse (Figure 2).

Figure 1: Admission episodes for alcohol-related conditions (Narrow) Directly standardised rate - per 100,000, 2020/21

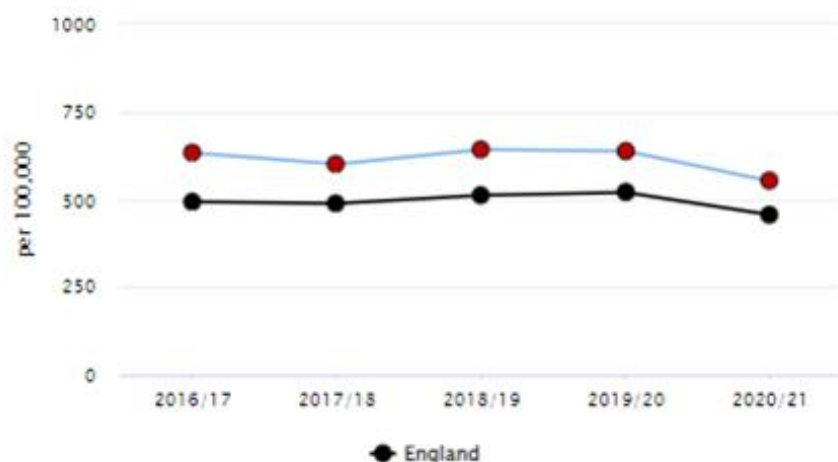
Benchmark to England average

Better
Similar
Worse

Trends for **Doncaster** All in Yorkshire and the Humber region Display **Selected indicator** All indicators

Admission episodes for alcohol-related conditions (Narrow): New method. This indicator uses a new set of attributable fractions, and so differ from that originally published. Directly standardised rate - per 100,000

[Show confidence intervals](#)
[Show 99.8% CI values](#)
[More options](#)



Recent trend: ➔ No significant change

Period		Doncaster				Yorkshire and the Humber	England
		Count	Value	95% Lower CI	95% Upper CI		
2016/17	●	1,894	632	604	661	541	492
2017/18	●	1,816	600	573	629	539	488
2018/19	●	1,957	642	614	671	564	512
2019/20	●	1,954	638	610	667	561	519
2020/21	●	1,694	552	526	579	489	456

Source: Calculated by OHID: Population Health Analysis (PHA) team using data from NHS Digital - Hospital Episode Statistics (HES) and Office for National Statistics (ONS) - Mid Year Population Estimates.

Figure 2: Admission episodes for alcohol-related conditions (Narrow), Yorkshire and Humber Directly standardised rate - per 100,000, 2020/21

Benchmark to England average Better Similar Worse

Areas All in Yorkshire and the Humber region All in England Display Table Table and chart

Area ▲▼	Recent Trend	Count ▲▼	Value ▲▼		95% Lower CI	95% Upper CI
England	→	247,972	456		454	458
Yorkshire and the Humber region	→	25,983	489		483	495
Kingston upon Hull	→	1,523	656		623	690
Doncaster	→	1,694	552		526	579
Barnsley	→	1,346	546		517	576
Rotherham	→	1,413	544		516	573
North East Lincolnshire	→	834	526		491	564
Wakefield	→	1,809	523		499	547
Calderdale	→	1,028	488		458	519
Bradford	→	2,342	487		467	507
Sheffield	→	2,457	478		459	498
Leeds	→	3,312	473		457	490
North Yorkshire	→	3,079	463		447	480
North Lincolnshire	→	809	454		423	487
York	→	883	453		423	484
Kirklees	↓	1,821	433		413	453
East Riding of Yorkshire	→	1,633	428		407	450

Source: Calculated by OHID: Population Health Analysis (PHA) team using data from NHS Digital - Hospital Episode Statistics (HES) and Office for National Statistics (ONS) - Mid Year Population Estimates.

As mentioned previously alcohol specific hospital admission data to DRI supplied by Doncaster Integrated Care Board has supplemented this report. ICD-10 codes (International Classification of Diseases), the international standard diagnostic classification for all general epidemiological, health management purposes and clinical use used to identify the alcohol admissions diagnoses.

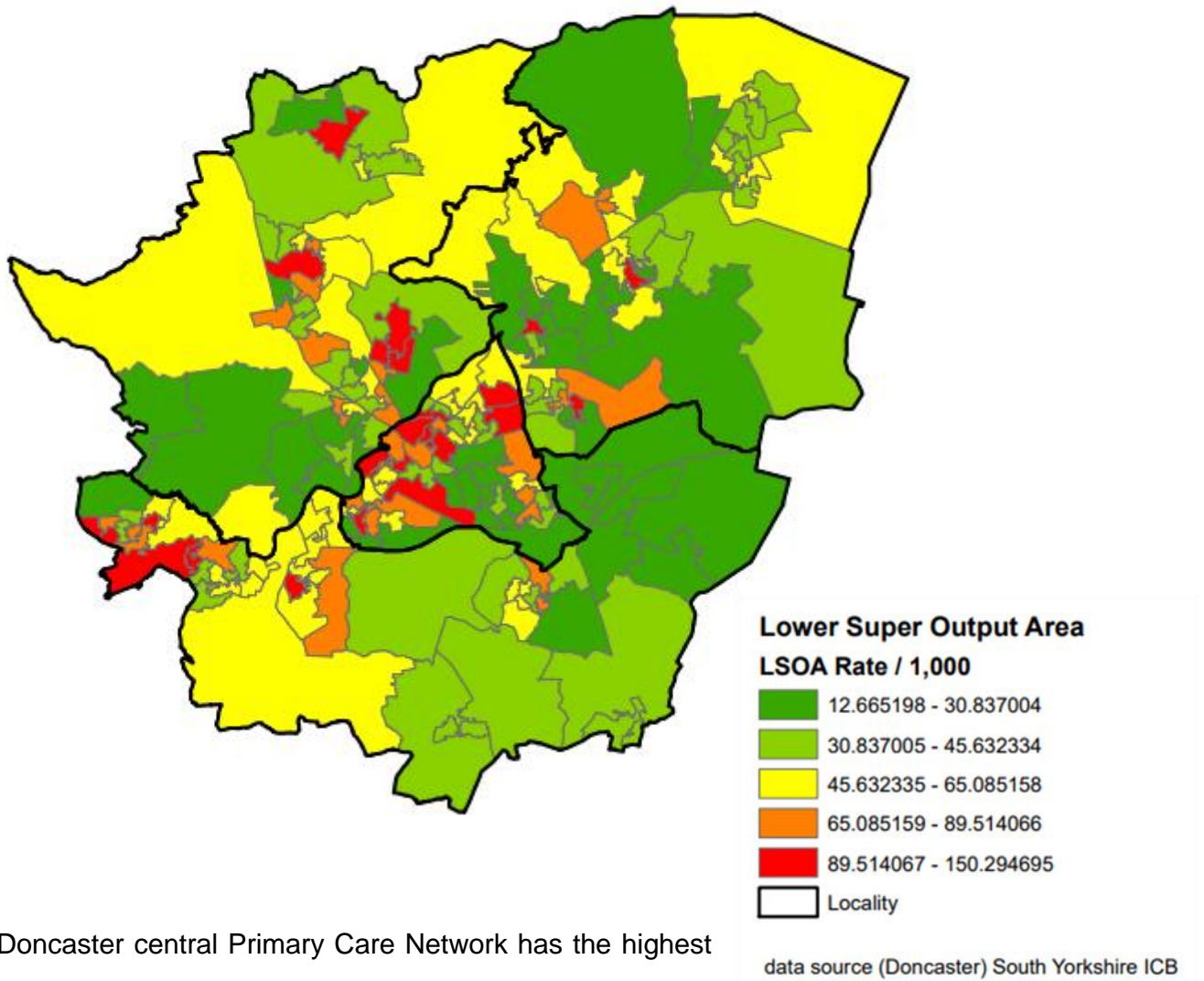
Figure 3: ICD-10 codes Wholly Attributable Alcohol Diagnosis

Accidental poisoning by and exposure to alcohol
Alcohol induced acute pancreatitis
Alcoholic cardiomyopathy
Alcoholic gastritis
Alcoholic liver disease
Alcoholic polyneuropathy
Alcohol-induced chronic pancreatitis
Degeneration of nervous system due to alcohol
Ethanol poisoning
Evidence of alcohol involvement determined by blood alcohol level
Evidence of alcohol involvement determined by level of intoxication
Foetal alcohol syndrome
Intentional self-poisoning by and exposure to alcohol
Mental disorders due to alcohol
Poisoning by and exposure to alcohol

The data received from the Doncaster Integrated Care Board shows since April 2013 to June 2022 there has been 16,998 alcohol specific admissions to DRI, 38.7% are from the most deprived areas of Doncaster. In the nine years of full data, admissions for males has fallen by 3% however females have risen by 23% over the same time period.

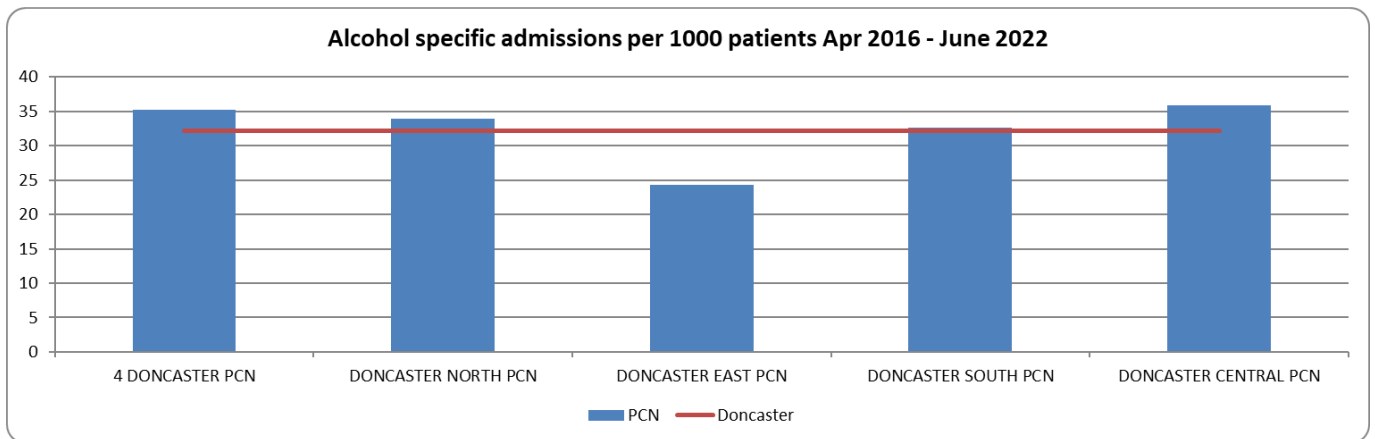
The data also shows the LSOA in which the patients reside. In the map below, the areas shown in red are the LSOA's with the highest alcohol specific admissions between April 2013 and May 2022. The ten LSOA's with the highest number of are alcohol admissions are; Balby Bridge, Lower Wheatley/Highfield Road, Denaby Main, Balby Carr Bank, Intake Heather Wood, Lower Wheatley North Bridge, Kirk Sandall Graham Road, Mexborough Wind Hill, Edlington South and Carcroft South Enterprise Park.

Alcohol Specific Admissions April 2013 to May 2022 per 1,000 of population by Lower Super Output Area



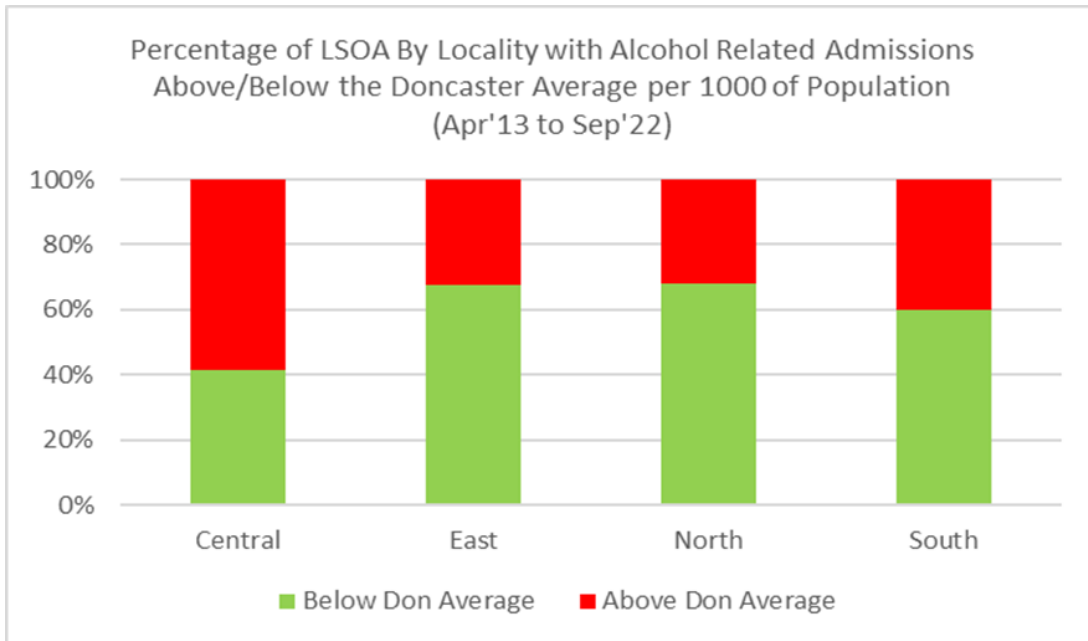
Doncaster central Primary Care Network has the highest rate of alcohol specific DRI admissions at 35.86 per 1,000 patients, which is above the Doncaster average of 32.12. This is also shown in the map above.

Figure 4: Alcohol specific DRI admissions by Primary Care Network (PCN)



There are 46 LSOA's in the central locality. Using the data supplied by Doncaster Integrated Care Board on alcohol specific admissions we know which LSOA these patients live. Out of the 46 LSOA's in the central locality, 27 are above the Doncaster average of 55.22 admissions per 1000 population, more than any other locality (Figure 5)

Figure 5: LSOA alcohol specific hospital admissions by locality



The 10 LSOA's with the most alcohol specific hospital admissions within the central locality between April 2017 and October 2022 are listed below.

Locality	LSOA name	Rate/1000	Don AveRATE
Central	Balby Bridge	153.73	55.22
Central	Lower Wheatley Highfield Road	133.04	
Central	Balby Carr Bank	128.07	
Central	Intake Heather Wood	121.33	
Central	Wheatley Hills Hag Wood	113.17	
Central	Lower Wheatley Wentworth Road	111.71	
Central	Lower Wheatley North Bridge	110.52	
Central	Town Fields	105.62	
Central	Balby Springwell Lane West	101.60	
Central	Hexthorpe	99.78	

Public Health Recommendation

Data received from Doncaster Integrated Care Board for alcohol specific admissions to DRI shows the residential areas where these patients live.

40% of all the admissions to DRI for alcohol come from the most deprived areas of Doncaster. The Lower Wheatley areas show high numbers of alcohol related hospital admissions and related ASB.

As a result of this data public health would recommend the cumulative impact area to be extended to cover all the LSOA's listed below.

Locality	LSOA name	Rate/1000	Don AveRATE
Central	Balby Bridge	153.73	55.22
Central	Lower Wheatley Highfield Road	133.04	
Central	Balby Carr Bank	128.07	
Central	Intake Heather Wood	121.33	
Central	Wheatley Hills Hag Wood	113.17	
Central	Lower Wheatley Wentworth Road	111.71	
Central	Lower Wheatley North Bridge	110.52	
Central	Town Fields	105.62	
Central	Balby Springwell Lane West	101.60	
Central	Hexthorpe	99.78	

APPENDIX C

PART 2: 25 PAGES

BREAKDOWN OF EACH PROPOSED AREA COMBINED WITH LICENSING AUTHORITY DATA

The following pages show, for each of the areas proposed by public health:

- A list of streets contained within the specified area**
- Licensing authority data on the number of licensed premises on each street**
- A map showing the proposed area**

Proposed Area: Balby Bridge

List of streets which are entirely or partially contained within the specified LSOA area and, number of licensed premises by year

Street	2005	2006	2007	2008	2009	2010	2011	2012	2013	2014	2015	2016	2017	2018	2019	2020	2021	2022	2023
Abbott Street	0	0	0	0	1	1	1	1	1	1	1	1	1	1	1	0	0	0	0
Bond Close	0	0	0	0	0	0	0	0	0	0	0	0	0	0	0	0	0	0	0
Cherry Tree Road	0	0	0	0	0	0	0	0	0	0	0	0	0	0	0	0	0	0	0
Cleveland Street	0	0	0	1	7	9	10	11	11	11	10	11	11	10	10	9	9	9	9
Ellerker Avenue	0	0	0	0	0	0	0	0	0	0	0	0	0	0	0	0	0	0	0
Elsworth Close	0	0	0	0	0	0	0	0	0	0	0	0	0	0	0	0	0	0	0
Grove Place	0	0	0	0	0	0	0	0	0	0	0	0	0	0	0	0	0	0	0
Milton Walk	0	0	0	0	0	0	0	0	0	0	0	0	0	0	0	0	0	0	0
Oxford Street	0	0	0	0	0	0	0	0	0	0	0	0	0	0	0	0	0	0	0
Roberts Road	0	0	1	2	3	3	3	3	3	3	3	3	3	3	3	3	3	3	3
Spansyke Street	0	0	0	0	0	0	0	0	0	0	0	0	0	0	0	0	0	0	0
St James Bridge	0	0	0	0	0	0	0	0	0	0	0	0	0	0	0	0	0	0	0
St James Street	0	0	0	0	1	1	1	1	1	1	1	1	2	2	2	2	2	2	2
St Sepulchre Gate West	1	2	5	6	4	4	4	4	3	3	3	3	3	3	2	2	3	3	3
Trafford Way	0	0	0	0	0	2	2	2	2	2	2	2	3	3	3	3	3	3	3

Balby Bridge

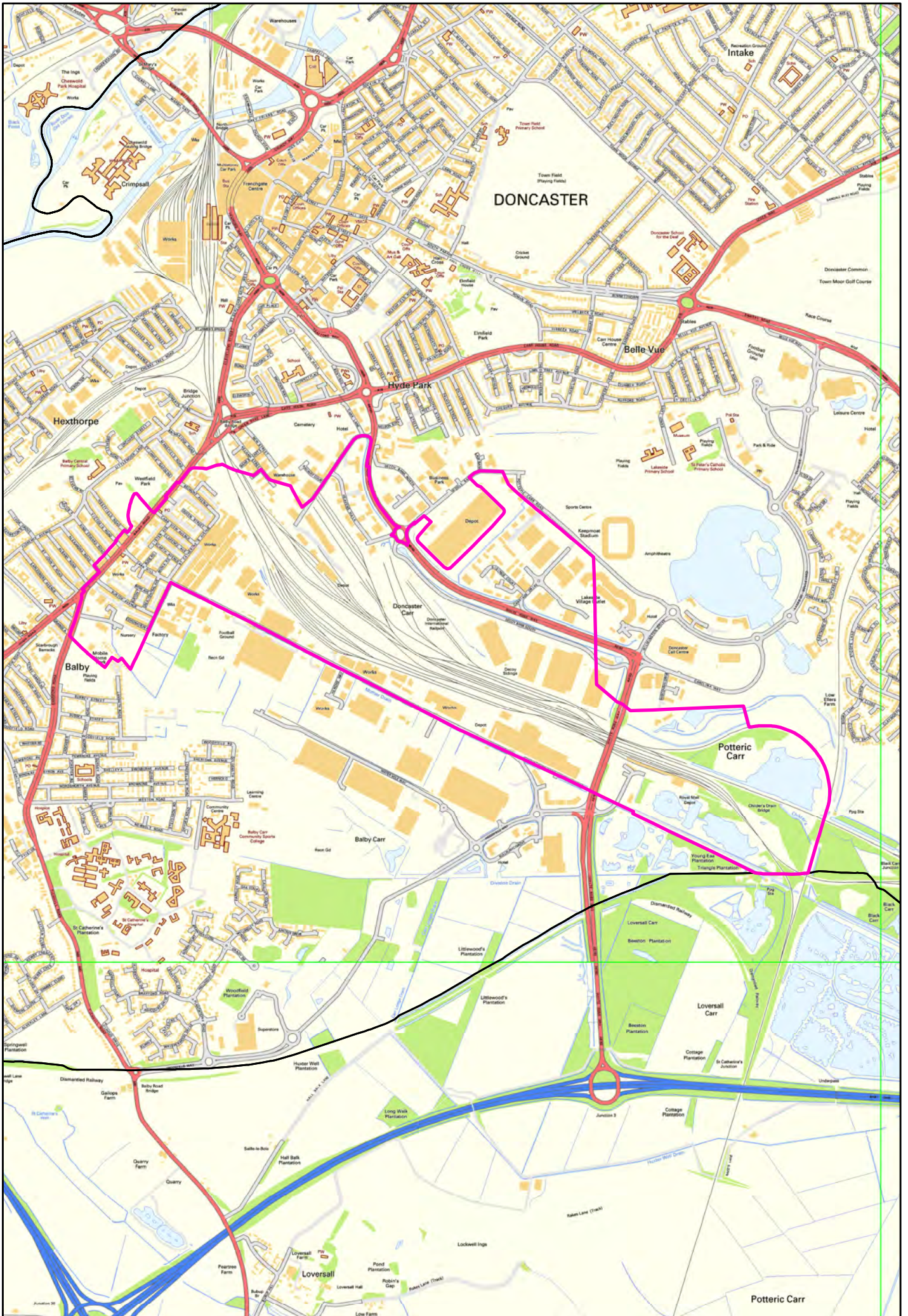


Proposed Area: Balby Carr Bank

List of streets which are entirely or partially contained within the specified LSOA area and, number of licensed premises by year

Street	2005	2006	2007	2008	2009	2010	2011	2012	2013	2014	2015	2016	2017	2018	2019	2020	2021	2022	2023
Balby Carr Bank	0	0	0	0	1	1	1	1	1	1	1	1	1	1	1	1	1	1	1
Balby Road	0	0	1	2	10	13	16	15	15	17	15	15	17	15	14	14	15	15	15
Belmont Avenue	0	0	0	0	0	0	0	0	0	0	0	0	0	0	0	0	0	0	0
Bude Road	0	0	0	0	0	0	0	0	0	0	0	0	0	0	0	0	0	0	0
Burton Avenue	0	0	0	0	0	0	0	0	0	0	0	0	0	0	0	0	0	0	0
Carr Hill	0	0	0	0	0	0	0	0	0	0	0	0	0	0	0	0	0	0	0
Carr View Avenue	0	0	1	1	1	0	0	0	0	0	0	0	0	0	0	0	0	0	0
Carriage Drive	0	0	0	0	0	0	0	0	0	0	0	0	0	0	0	0	0	0	0
Clarence Avenue	0	0	0	0	0	0	0	0	0	0	0	0	0	0	0	0	0	0	0
Coronation Road	0	0	0	0	0	0	0	0	0	0	0	0	0	0	0	0	0	0	0
Cross Bank	0	0	0	0	0	0	0	0	0	0	0	0	0	0	0	0	0	0	0
Decoy Bank South	0	0	0	0	0	0	0	0	0	0	0	0	0	0	0	0	0	0	0
Great Central Avenue	0	0	0	0	1	1	1	1	1	1	1	1	1	1	1	1	1	1	1
Heavens Walk	0	0	0	0	0	0	0	0	0	0	0	0	0	0	0	0	0	0	0
Lister Avenue	0	0	0	0	0	0	0	0	0	0	0	0	0	0	0	0	0	0	0
Mona Road	0	0	0	0	0	0	0	0	0	0	0	0	0	0	0	0	0	0	0
Queen Street	0	0	0	0	0	0	0	0	0	0	0	0	0	0	0	0	0	0	0
Rose Avenue	0	0	0	0	1	2	2	2	2	2	2	2	2	2	2	2	2	2	2
Scarth Avenue	0	0	0	0	0	0	0	0	0	0	0	0	0	0	0	0	0	0	0
Sidings Court	0	0	0	0	0	0	0	0	0	0	0	0	0	0	0	0	0	0	0
St Catherine's Avenue	0	0	0	1	1	0	0	0	0	0	0	0	0	0	0	0	0	0	0
Ten Pound Walk	0	0	0	0	0	0	0	0	0	0	0	0	0	0	0	0	0	0	0
White Rose Way	0	0	0	0	0	0	0	0	0	0	0	0	1	2	1	1	1	1	1

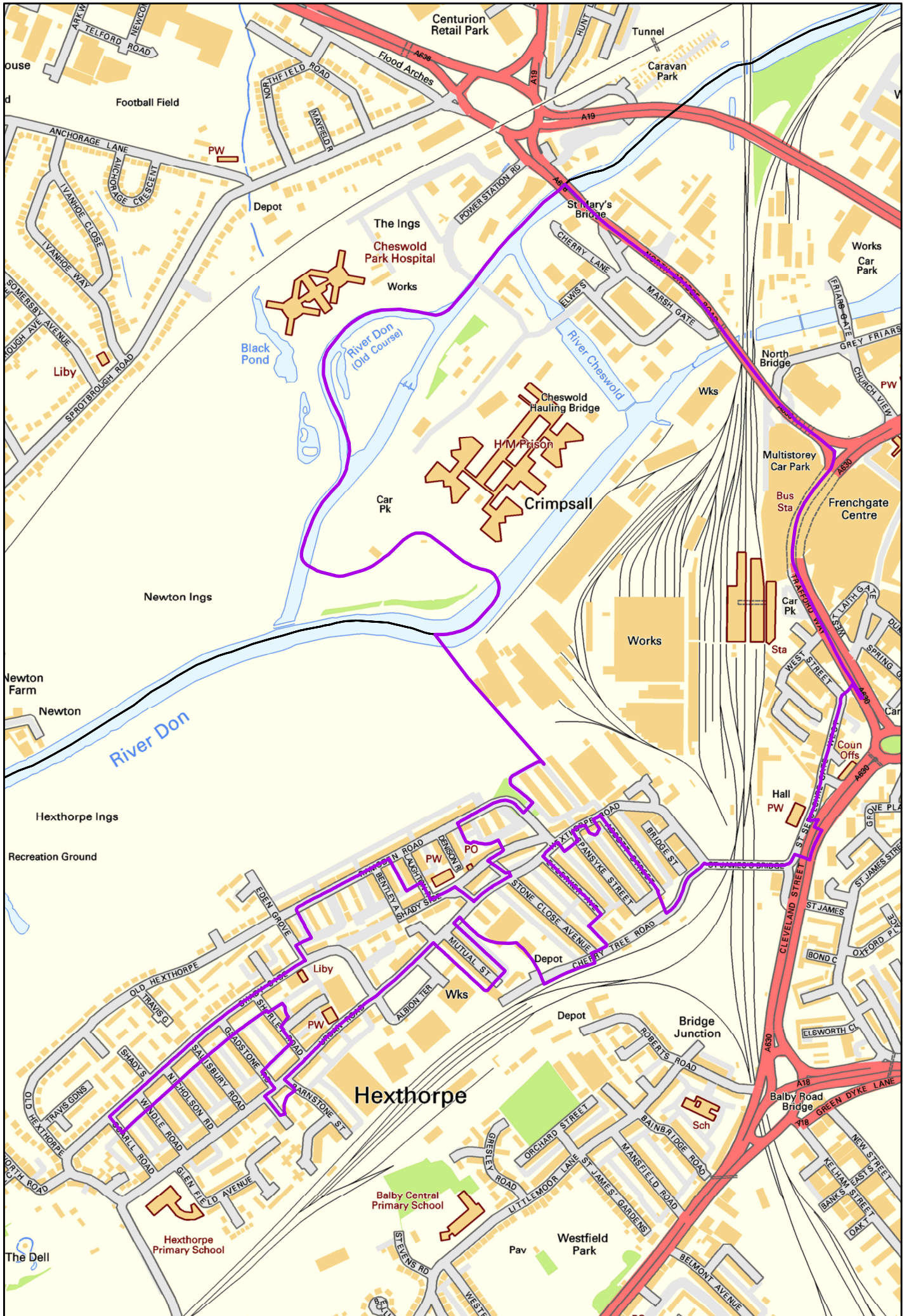
Balby Carr Bank



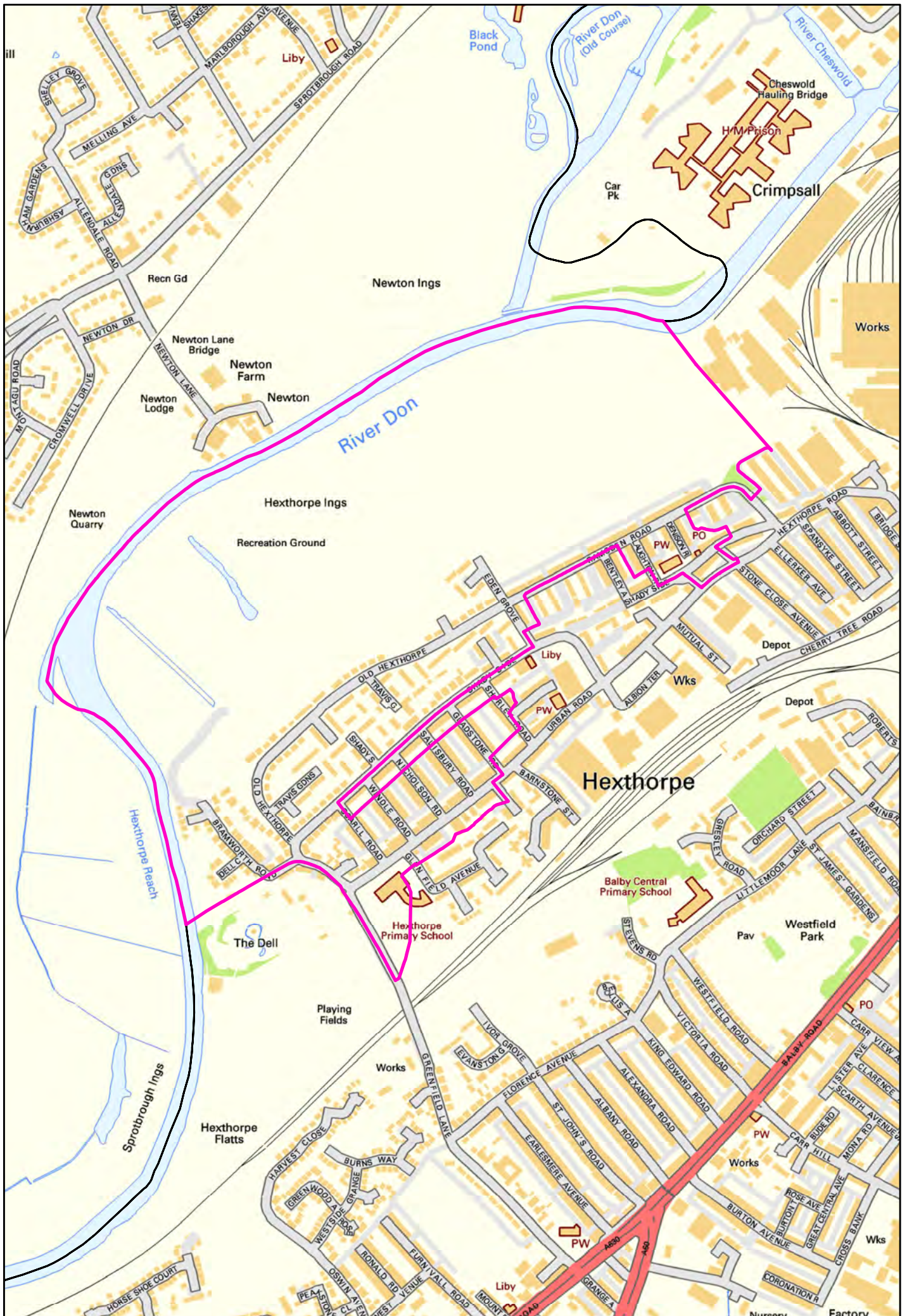
Balby Springwell Lane West



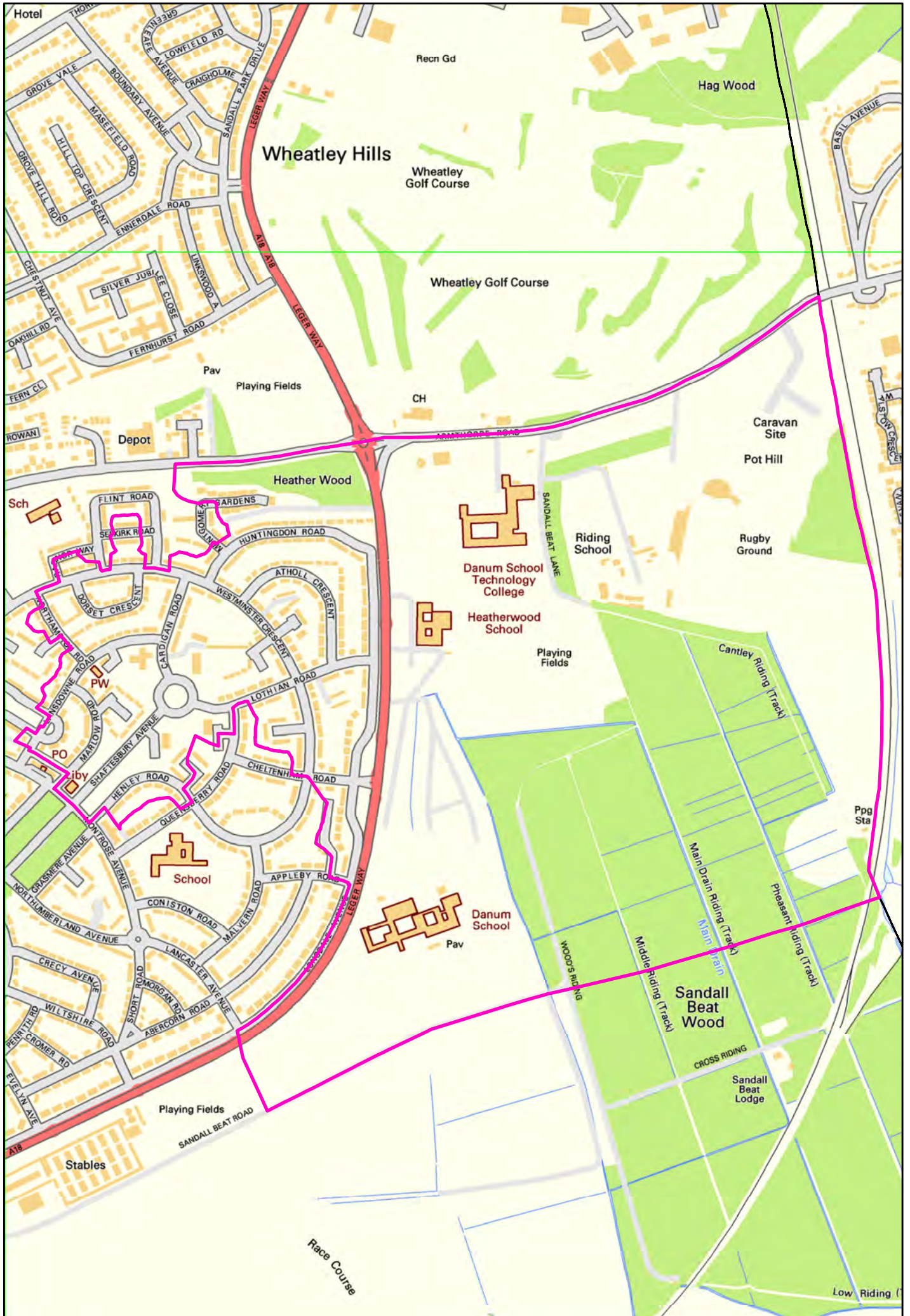
Hexthorpe St Sepulchre Gate West



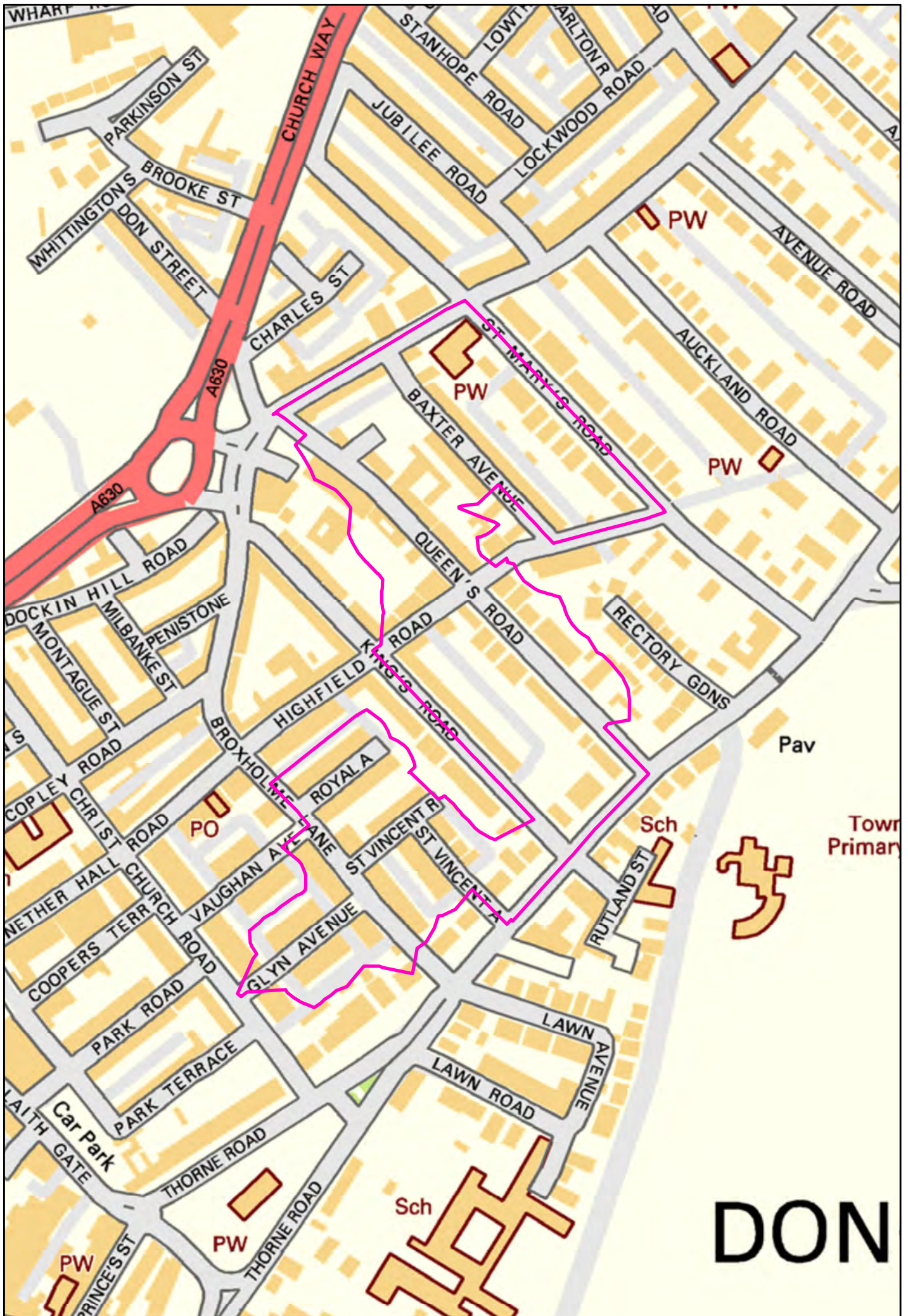
Hexthorpe



Intake Heather Wood



Lower Wheatley Highfield Road



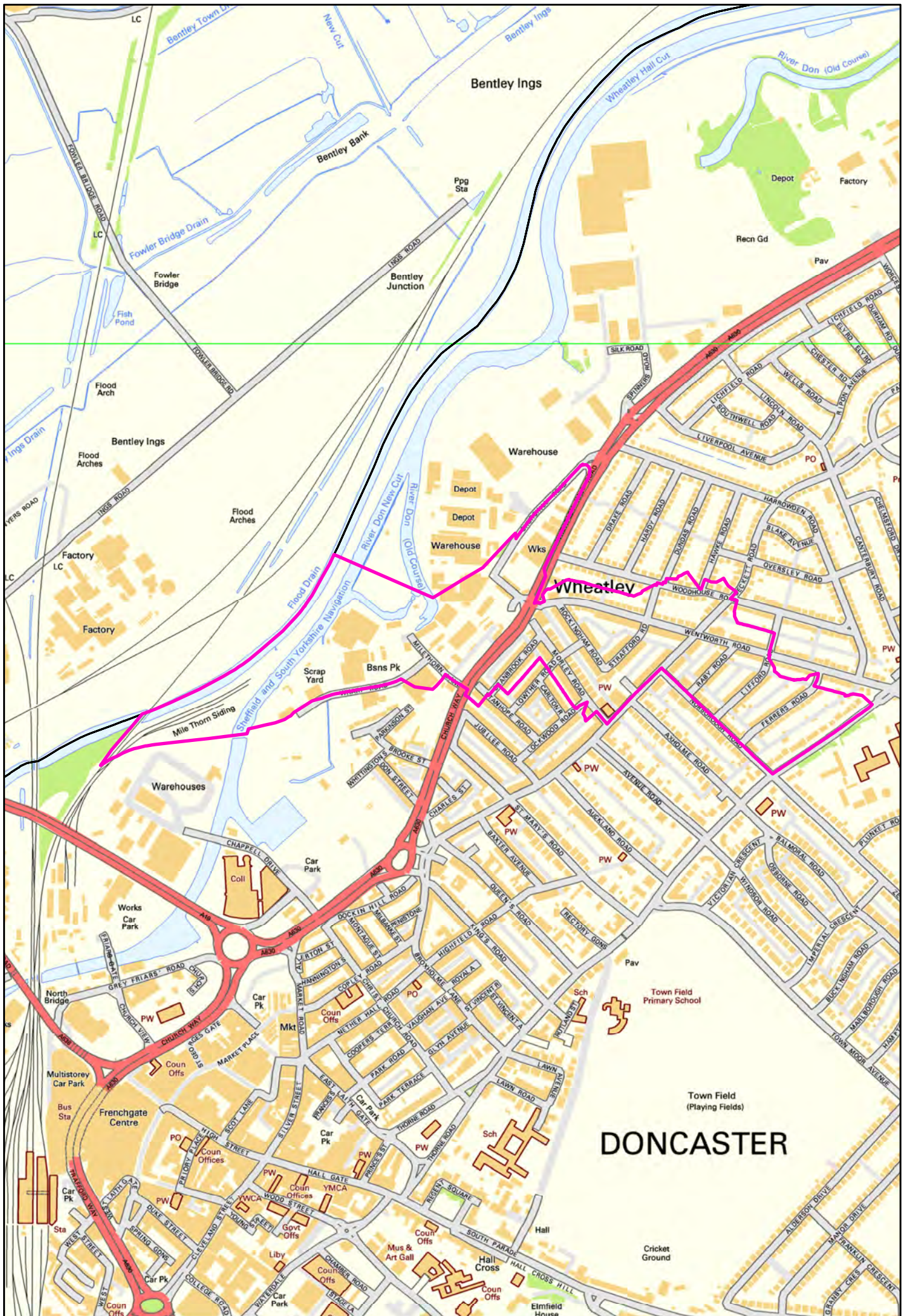
Scot Lane	0	0	0	0	2	2	1	1	1	1	1	2	2	1	2	3	3	2	2
*Silver Street	0	1	6	7	13	24	26	24	25	24	25	24	24	23	24	24	26	26	26
St Georges Gate	0	0	0	0	0	0	0	0	0	0	0	0	0	0	0	0	0	0	0
St Mary's Bridge	0	0	0	0	0	0	0	0	0	0	0	0	0	0	0	0	0	0	0
Stanhope Road	1	1	1	0	0	0	0	0	0	0	0	0	0	0	0	0	0	0	0
Wharf Road	0	0	0	0	0	0	0	0	0	0	0	0	0	0	0	0	0	0	0
Whittington Street	0	0	0	0	0	0	0	0	0	0	0	0	0	0	0	0	0	0	0

*Streets shown in **bold** are already part of the existing cumulative impact areas.

Lower Wheatley North Bridge



Lower Wheatley Wentworth Road



Proposed Area: Town Centre Waterdale

List of streets which are entirely or partially contained within the specified LSOA area and, number of licensed premises by year

Street	2005	2006	2007	2008	2009	2010	2011	2012	2013	2014	2015	2016	2017	2018	2019	2020	2021	2022	2023
Apley Road	0	0	0	0	0	0	0	0	0	0	0	0	0	0	0	0	0	0	0
Beech Field Road	0	0	0	0	0	0	0	0	0	0	0	0	0	0	0	0	0	0	0
Chamer Road	0	0	0	0	0	0	0	0	0	0	0	0	0	0	0	0	0	0	0
Chequer Road	0	0	0	1	2	2	2	2	3	3	3	3	3	3	2	2	2	2	2
*Cleveland Street	0	0	0	1	7	9	10	11	11	11	10	11	11	10	10	9	9	9	9
College Road	1	0	0	2	2	2	2	2	2	2	2	2	3	3	3	2	1	1	1
Duke Street	0	2	2	2	1	0	0	0	2	2	1	2	2	2	1	1	1	1	1
East Laith Gate	0	0	1	1	2	6	6	8	8	9	8	7	7	9	10	10	12	12	10
Frances Street	0	0	0	0	0	0	0	0	0	0	0	0	0	0	0	0	0	0	0
*Hall Gate	0	1	3	2	13	19	19	18	19	21	20	20	22	21	21	21	21	22	22
*High Street	0	1	0	2	5	8	9	10	9	9	8	10	10	9	9	10	10	10	9
Park Terrace	0	0	0	0	0	0	0	0	0	0	0	0	0	0	0	0	0	0	0
Prince's Street	0	0	0	0	0	0	0	0	0	0	0	0	0	0	0	0	0	0	0
Priory Place	0	0	0	0	1	1	1	1	1	1	1	1	1	1	1	1	1	1	1
Regent Square	0	0	0	0	2	2	2	2	2	2	2	2	2	2	2	2	2	2	2
*Silver Street	0	1	6	7	13	24	26	24	25	24	25	24	24	23	24	24	26	26	26
South Parade	0	0	1	2	2	4	4	4	4	4	4	4	4	4	6	6	6	6	6
Spring Gardens	0	1	1	1	0	0	0	0	0	0	0	0	0	0	0	0	0	0	0
Stage Lane	0	0	0	0	0	0	0	0	0	0	0	0	0	0	0	0	0	0	0
Thorne Road	1	1	0	2	4	5	5	5	5	6	6	6	6	6	6	6	6	6	5
Trafford Way	0	0	0	0	0	2	2	2	2	2	2	3	3	3	3	3	3	3	3
Waterdale	0	0	0	0	2	5	5	6	7	6	5	5	6	5	5	7	7	7	7
West Laith Gate	0	0	0	0	0	2	2	2	2	2	2	2	2	2	2	2	2	2	2
Whitburn Road	0	0	0	0	0	1	1	1	1	1	1	1	1	1	1	1	1	0	0
Wood Street	0	1	3	1	3	3	3	3	3	3	4	4	4	3	3	4	3	5	5
Young Street	0	0	0	0	0	0	0	0	1	1	1	1	1	1	1	1	1	1	1

*Streets shown in **bold** are already part of an existing cumulative impact area

Town Centre Waterdale



Town Fields



Wheatley Hills Hag Wood

